



Fawkner Primary School

Yard Duty & Supervision Policy - 2022



Help for non-English speakers

If you need help to understand the information in this policy please contact Fawkner Primary School.

PURPOSE

To ensure school staff understand their supervision and yard duty responsibilities.

SCOPE

This policy applies to all teaching and non-teaching staff at Fawkner Primary School including education support staff, casual relief teachers and visiting teachers.

POLICY

Appropriate supervision is an important strategy to monitor student behaviour and enables staff to identify and respond to possible risks at school as they arise. It also plays a vital role in helping schools to discharge their duty of care to students.

The Principal is responsible for ensuring that there is a well organised and responsive system of supervision and yard duty in place during school hours, before and after school, and on school excursions and camps and other school activities.

School staff are responsible for following reasonable and lawful instructions from the Principal, including instructions to provide supervision to students at specific dates, times and places. Supervision should be undertaken in a way that identifies and mitigates risks to child safety.

Before and after school

Fawkner Primary School's grounds are supervised by school staff from 8.45am until 3.45pm. Outside of these hours, school staff will not be available to supervise students.

Three teachers will be rostered on for each period of duty, with the exception that for the last 15 minutes of lunch time a third teacher will also be rostered on. There is no difference in the areas requiring supervision either before school, after school or during recess and lunch.

Parents and carers will be advised through our school newsletter and in our Parent Handbook about before and after school supervision. This policy will be published on our school website and regular reminders included in our newsletter that they should not allow their children to attend Fawkner Primary School outside of these hours. Families will be encouraged to contact Theircare on 1300 072 410 or refer to <https://theircare.com.au/> for more information about the after school care facilities available to our school community.

If a student arrives at school before supervision commences at the beginning of the day, the Principal or nominee staff member will, as soon as practicable, follow up with the parent/carer to:

- advise of the supervision arrangements before school
- request that the parent/carer make alternate arrangements.

If a student is not collected before supervision finishes at the end of the day, the Principal or nominee staff member will consider whether it is appropriate to:

- attempt to contact the parents/carers
- attempt to contact the emergency contacts
- place the student in an out of school hours care program (if available and the parent consents)
- contact Victoria Police and/or Child Protection to arrange for the supervision, care and protection of the student.

School staff who are rostered on for before or after school supervision must follow the processes outlined below.

Yard duty

All teaching staff at Fawkner Primary School are expected to assist with yard duty supervision and will be included in the weekly roster.

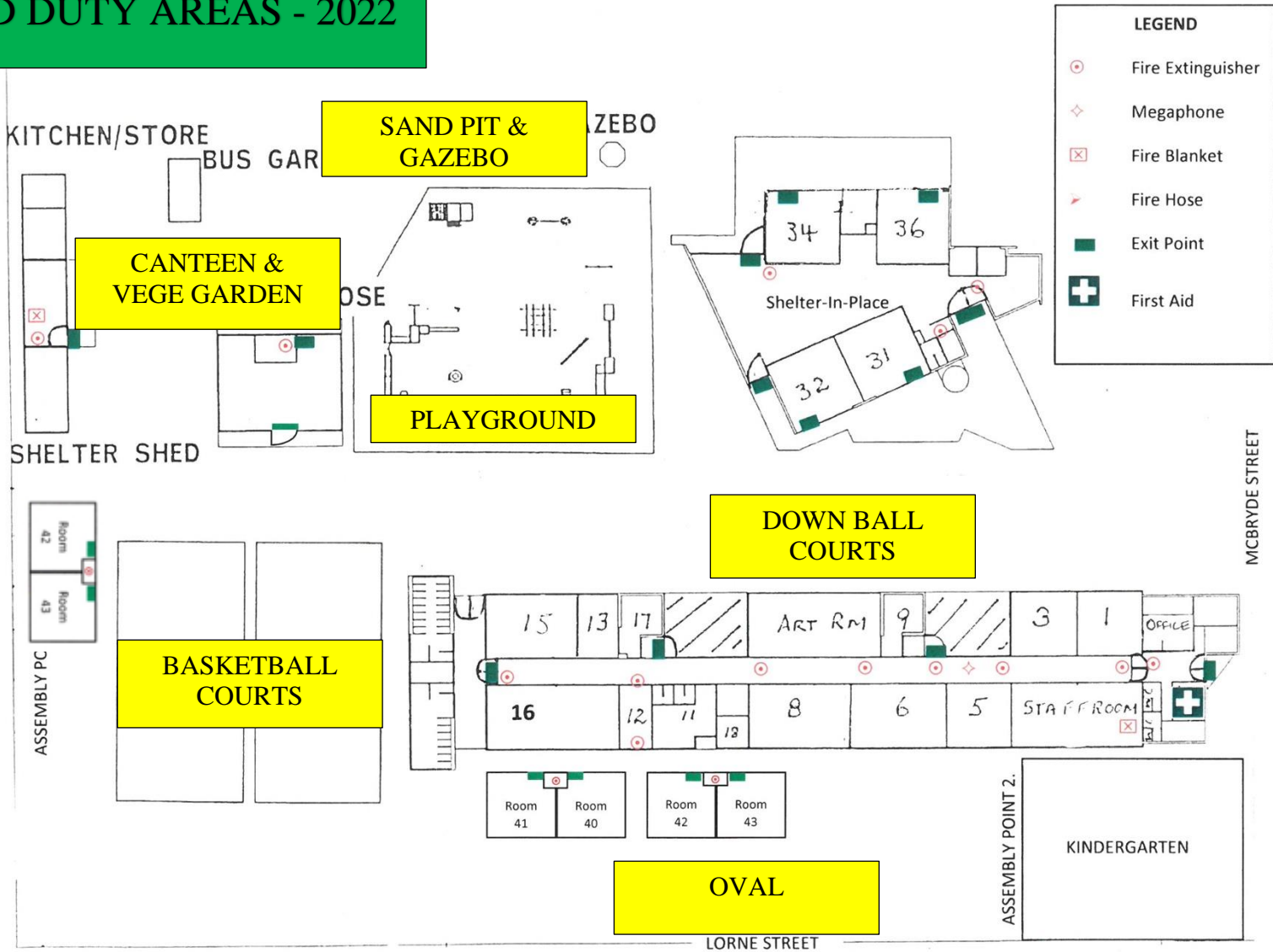
The Assistant Principal is responsible for preparing and communicating the yard duty roster on a regular basis. At Fawkner Primary School, two staff members will be assigned to a block of duty and are expected to ensure that they each cover different areas of the yard. Teachers will wear HiVis vests whilst on duty.

Yard duty zones

The designated yard duty areas for our school as at Term 2 2022 are;

Zone	Area
Zone 1	<ul style="list-style-type: none">· Oval· Basketball Courts· Canteen & Vege Garden
Zone 2	<ul style="list-style-type: none">· Down Ball Courts· Playground· Sandpit· Gazebo

YARD DUTY AREAS - 2022



School staff must:

- wear a provided safety/hi-vis vest whilst on yard duty. Safety/hi-vis vests will be stored in each classroom (including specialist rooms)
- carry the yard duty first aid bag at all times during supervision. The yard duty first aid bag will be stored in each classroom (including specialist rooms).

Yard duty equipment must be returned after the period of supervision.

Yard duty responsibilities

Staff who are rostered for yard duty must remain in the designated area until they are replaced by a relieving staff member.

During yard duty, supervising school staff must:

- methodically move around the designated zone
- be alert and vigilant
- intervene immediately if potentially dangerous or inappropriate behaviour is observed in the yard
- enforce behavioural standards and implement appropriate consequences for breaches of safety rules, in accordance with any relevant disciplinary measures set out in the school's Student Engagement policy
- ensure that students who require first aid assistance receive it as soon as practicable
- log any incidents or near misses as appropriate in Sentral.

If being relieved of their yard duty shift by another staff member (for example, where the shift is 'split' into 2 consecutive time periods), the staff member must ensure that a brief but adequate verbal 'handover' is given to the relieving staff member in relation to any issues which may have arisen during the first shift.

If the supervising staff member is unable to conduct yard duty at the designated time, they should contact the Assistant Principal with as much notice as possible prior to the relevant yard duty shift to ensure that alternative arrangements are made.

If the supervising staff member needs to leave yard duty during the allocated time, they should contact the Assistant Principal but should not leave the designated area until the relieving staff member has arrived in the designated area.

If the relieving staff member does not arrive for yard duty, the staff member currently on duty should send a message to the staffroom and not leave the designated area until a relieving staff member has arrived.

Students will be encouraged to speak to the supervising yard duty staff member if they require assistance during recess or lunchtime.

Classroom

The classroom teacher is responsible for the supervision of all students in their care during class.

If a teacher needs to leave the classroom unattended at any time during a lesson, they should first contact the Assistant Principal or team leader for assistance. The teacher should then wait until a replacement staff member has arrived at the classroom before leaving.

School activities, camps and excursions

The Principal and leadership team are responsible for ensuring that students are appropriately supervised during all school activities, camps and excursions, including when external providers are engaged to conduct part or all of the activity. Appropriate supervision will be planned for school activities, camps and excursions on an individual basis, depending on the activities to be undertaken and the level of potential risk involved, and will follow the supervision requirements in the Department of Education and Training [Excursions Policy](#).

Digital devices and virtual classroom

Fawkner Primary School follows the Department's [Cybersafety and Responsible Use of Technologies Policy](#) with respect to supervision of students using digital devices.

Fawkner Primary School will also ensure appropriate supervision of students participating in remote and flexible learning environments while on school site. In these cases, students will be supervised in a nominated classroom.

While parents are responsible for the appropriate supervision of students accessing virtual classrooms from home:

- student attendance will be monitored and the roll marked on a daily basis by 1.30pm on Sentral
- any wellbeing or safety concerns for the student will be managed in accordance with our usual processes – refer to our Student Wellbeing and Engagement Policy and our Child Safety Responding and Reporting Policy and Procedures for further information.

Students requiring additional supervision support

Sometimes students will require additional supervision, such as students with disability or other additional needs. In these cases, the Principal or delegate will ensure arrangements are made to roster additional staff as required. This may include on yard duty, in the classroom or during school activities.

Supervision of students in emergency operating environments

In emergency circumstances our school will follow our Emergency Management Plan, including with respect to supervision.

In the event of any mandatory period of remote or flexible learning our School will follow the operations guidance issued by the Department.

Other areas requiring supervision

When students are moving from classrooms to different areas of the school they will be accompanied by a teacher.

When students need to go and use the bathroom during teaching and learning time, they will be sent in pairs.

COMMUNICATION

This policy will be communicated to our school staff in the following ways:

- Included in staff induction processes
- Discussed at staff briefings or meetings, as required
- Included in our staff handbook
- Made available in hard copy for our school administration office upon request

Information for parents and students on supervision before and after school is available on our school website.

FURTHER INFORMATION AND RESOURCES

- the Department's Policy and Advisory Library:
 - [Supervision of Students](#)
 - [Duty of Care](#)
 - [Child Safe Standards](#)
 - [Visitors in Schools](#)
 - [Excursions](#)
 - [Cybersafety and Responsible Use of Technologies](#)

REVIEW CYCLE

Policy last reviewed	June 2022
Approved by	Roger Pell (Principal)
Next scheduled review date	June 2023

This policy will also be updated if significant changes are made to school grounds that require a revision of Fawkner Primary School's yard duty and supervision arrangements.