

3/4 NEWSLETTER

Dear Parents/Guardians,

Welcome to Term 1, 2024.

We are all settling back into learning nicely. 😊

A few reminders:

Students must wear their hats in Term 1
- Wushka can be used for home reading, as well as books borrowed from the school library

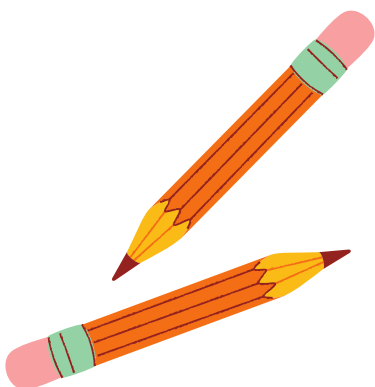
Keydates:

Meet the teacher
22nd February



Upcoming Events

- 8th of March - House Sports Day
- 11th of March - (Labour Day) Public Holiday
- 28th March - Last Day of Term 1 (2.30pm finish)
- 15th April - Start of Term 2



Grade 3/4 Specialist Timetable

3/4 S

ITALIAN: Tuesday

P.E: Wednesday

STEM: Wednesday

ART: Thursday

3/4 W

ITALIAN: Tuesday

STEM: Wednesday

ART: Wednesday

P.E Thursday

3/4 R

ITALIAN: Tuesday

STEM: Tuesday

ART: Wednesday

P.E: Wednesday



LEARNING OVERVIEW

This is an overview of what your child will be learning this term.

In Reading, Grade 3/4s are focusing on:

- using comprehension strategies to build meaning from text
- evaluating texts by drawing on a growing knowledge of context, text structures and language features
- establishing personal preferences for texts and share responses with others
- making connections between the text and students own experiences and other texts
- utilising reading strategies to enhance comprehension

In Writing, Grade 3/4s are focusing on:

- building and expanding understanding of the spelling sounds within words
- using the elements of a narrative text in order to effectively construct their own engaging narrative.
- students applying their knowledge of narrative text structure, language and features when writing their narrative.

In Maths, Grade 3/4S are focusing on :

- Place value in numbers
- Odd and even numbers
- Measuring and comparing lengths
- Problem-solving using different mathematical strategies and concepts

Learning Overview


In Integrated Studies, Grade 3/4S are focusing on:





Science (Melting Moments & Day and Night)

- how change of state between solid and liquid can be caused by adding or removing heat
- Natural and processed materials have a range of physical properties; these properties can influence their use
- Earth's rotation on its axis causes regular changes, including night and day
- Earth's surface changes over time as a result of natural processes and human activity

WELLBEING

Students participate in the Respectful Relationships Program that promotes the development of interpersonal skills and developing resilience. Students also engage in lessons about the Zones of Regulation.

 The **ZONES** of Regulation™

			
BLUE ZONE Sad Sick Tired Bored Moving Slowly	GREEN ZONE Happy Calm Feeling Okay Focused Relaxed	YELLOW ZONE Frustrated Worried Silly/Wiggly Excited Loss of Some Control	RED ZONE Mad/Angry Terrified Elated/Ecstatic Devastated Out of Control

ter | Social Mind